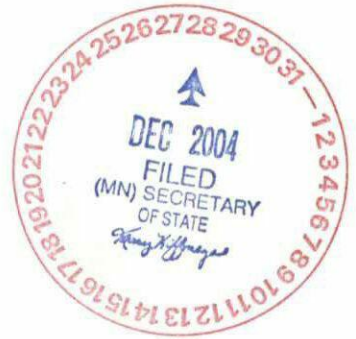


# NEW RICHLAND

## HISTORY IS OURS — FUTURE IS YOURS

Box 57, 203 N. Broadway • New Richland, MN 56072 • (507) 465-3514

STATE OF MINNESOTA  
COUNTY OF WASECA  
CITY OF NEW RICHLAND



### CLERK-TREASURER'S CERTIFICATION

I, the undersigned, being the duly qualified and acting Clerk-Treasurer of the City of New Richland, Minnesota (the "City"), **DO HEREBY CERTIFY** that the Ordinance Annexing Land Located Into The City of New Richland authorized at the December 13, 2004 meeting was passed by a majority vote of the City Council, which is on file and of record in the office of the City.

WITNESS my hand officially and the official seal of the City of New Richland, Minnesota this 20<sup>th</sup> day of December of 2004.

SEAL

Gail A. Schmidt  
Clerk-Treasurer

**AN ORDINANCE OF THE CITY OF NEW RICHLAND, MINNESOTA  
ANNEXING LAND LOCATED IN THE CITY OF NEW RICHLAND,  
WASECA COUNTY, MINNESOTA, PURSUANT TO MINN. STAT. 414.033, SUBD 2 (1)**

**WHEREAS**, the territory described below is not presently located within the corporate limits of any incorporated city and abuts the corporate limits of the City of New Richland, Minnesota; and

**WHEREAS**, the City of New Richland, through the New Richland Economic Development Authority, owns the property proposed for annexation; and

**WHEREAS**, the property to be annexed is less than 60 acres in size; and

**WHEREAS**, the parcel to be annexed is not currently served by public sewer facilities and is about to become urban in character;

**NOW, THEREFORE, THE CITY COUNCIL OF THE CITY OF NEW RICHLAND, WASECA COUNTY, MINNESOTA DOES HEREBY ORDAIN:**

**Section 1.** Territory annexed. Pursuant to Minnesota Statute 414.033 Subd. 2(1), the corporate limits of the City of New Richland are hereby extended by annexation of the unplatted property described as follows:

All that part of the SE¼ NW¼ Section 17-T105N-R22W, Waseca County, Minnesota; described as follows:

Commencing at the northeast corner of Lillesve Subdivision, as the same is platted and recorded in the office of the County Recorder of Waseca County, Minnesota;

thence West a distance of 378.00 feet, on the north line of said Lillesve Subdivision, to the northwest corner thereof;

thence South a distance of 174.00 feet, on the west line of said Lillesve Subdivision, at a deflection angle of 89°32'15" left, to the northeast corner of Richland Subdivision, as the same is platted and recorded in the office of the County Recorder of Waseca County, Minnesota;

thence West a distance of 756.00 feet, on the north line of said Richland Subdivision, at a deflection angle of 89°32'15" right, to the northwest corner of said Richland Subdivision;

thence South 326.00 feet, on the west line of said Richland Subdivision, at a deflection angle of 89°32'15" left, to the southwest corner of said Richland Subdivision;

thence West a distance of 166.00 feet, on the south line of said SE¼ NW¼, at a deflection angle of 89°32'15" right;



thence North a distance of 383.90 feet, at a deflection angle of 90°27'45" right;

thence West a distance of 128.50 feet, at a deflection angle of 90°27'45" left;

thence North a distance of 324.95 feet, at a deflection angle of 90°27'45" right;

thence East a distance of 1428.57 feet, at a deflection angle of 89°32'15" right, to a point on the east line of said SE¼ NW¼;

thence South a distance of 208.80 feet, on the east line of said SE¼ NW¼, at a deflection angle of 90°27'45" right, to the point of beginning;

subject to highway easement on the easterly-most side thereof.

**Section 2.** Filing. The City Clerk is directed to file certified copies of this ordinance with the Secretary of State, the County Auditor of Waseca County, the Town Clerk of New Richland Township and Minnesota Planning Municipal Boundary Adjustments.

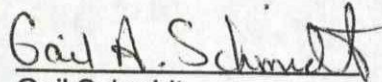
**Section 3.** Effective date of annexation. This ordinance takes effect upon its passage, publication and the filing of certified copies as directed in Section 2, and its approval by Minnesota Planning Municipal Boundary Adjustments.

**Section 4.** Official Map. The City Engineer is directed to change the Official Zoning Map to reflect the new boarder of the City resulting from annexation of the property and to depict its zoning classification as residential.

Adopted by the City Council of the City of New Richland, Waseca County, Minnesota this 13th day of December, 2004.

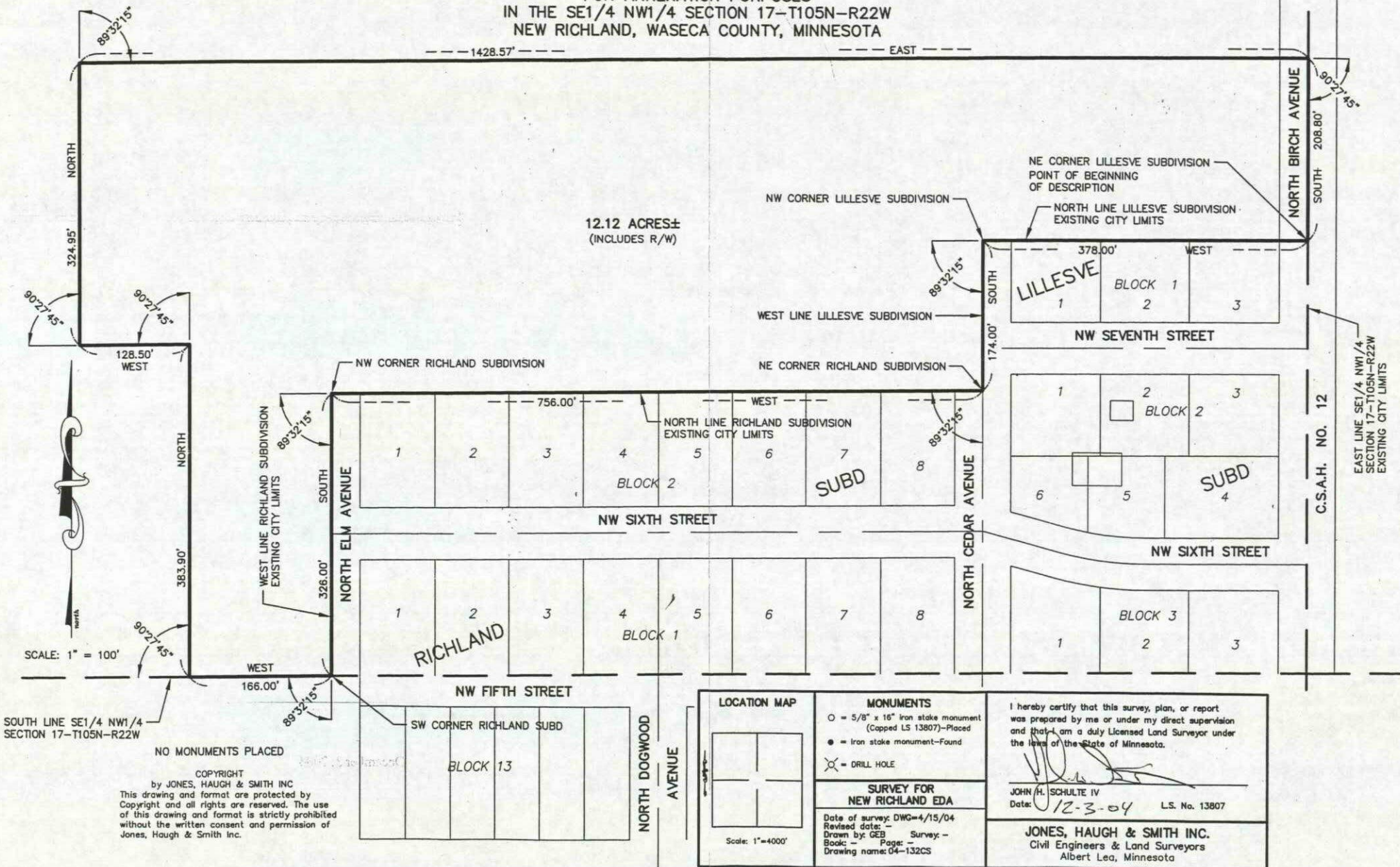
  
Mayor

ATTEST:

  
Gail Schmidt  
City Clerk

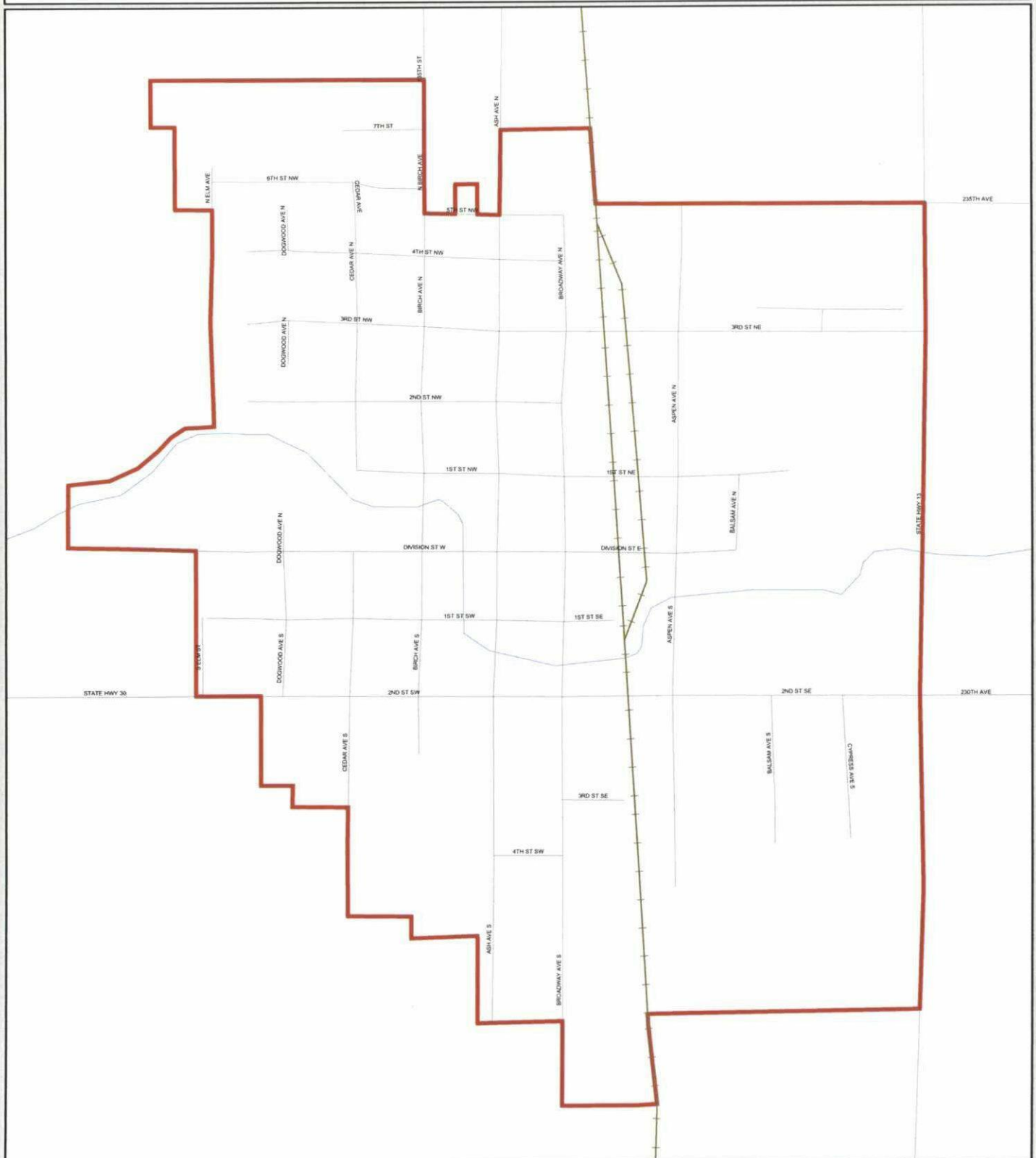


# DRAWING OF TRACT FOR ANNEXATION PURPOSES IN THE SE1/4 NW1/4 SECTION 17-T105N-R22W NEW RICHLAND, WASECA COUNTY, MINNESOTA



<p><b>LOCATION MAP</b></p> <p>Scale: 1"=4000'</p>	<p><b>MONUMENTS</b></p> <p>○ = 5/8" x 16" Iron stake monument (Capped LS 13807)-Placed</p> <p>● = Iron stake monument-Found</p> <p>⊗ = DRILL HOLE</p>	<p>I hereby certify that this survey, plan, or report was prepared by me or under my direct supervision and that I am a duly Licensed Land Surveyor under the laws of the State of Minnesota.</p> <p>JOHN H. SCHULTE IV Date: 12-3-04 L.S. No. 13807</p> <p><b>JONES, HAUGH &amp; SMITH INC.</b> Civil Engineers &amp; Land Surveyors Albert Lea, Minnesota</p>
<p><b>SURVEY FOR NEW RICHLAND EDA</b></p> <p>Date of survey: DWG=4/15/04 Revised date: - Drawn by: GEB Survey: - Book: - Page: - Drawing name: 04-132CS</p>		

# City of New Richland



- |                            |                    |
|----------------------------|--------------------|
| County Boundaries          | Streets / Highways |
| City / Township Boundaries | Railroads          |
| Precincts                  | Lakes              |
|                            | Streams / Rivers   |

April 25th, 2005

0 0.015 0.03 0.06 0.09

This map was created solely for precinct change verification





---

## MINNESOTA SECRETARY OF STATE

---

Gail A. Schmidt  
Clerk-Treasurer  
Box 57, 203 N. Broadway  
New Richland, Minnesota 56072  
April 25, 2005

**RE: Precinct Boundary Change**

Dear Ms. Schmidt:

This office is in receipt of your Precinct Boundary Change Notice. This notified us of an ordinance adopted by the Mayor and City Council of the City of New Richland, Waseca County, Minnesota, on December 13, 2004. This ordinance authorized the annexation of territory from New Richland Township.

The state's four digit precinct number assigned to the New Richland precinct remains: 0050. You must coordinate with the Waseca County Auditor's Office to ensure adjustments to the block ranges in the county precinct finder in the statewide voter registration system are made. For assistance in making these changes, e-mail production support at the Office of the Secretary of State.

Minnesota Statutes, section 204B.14, subdivision 4, provides that a precinct boundary change shall not take effect until notice of the change has been posted in the office of the municipal clerk or county auditor for at least 60 days.

Sincerely,

A handwritten signature in blue ink, appearing to read "Todd N. Bleess", is written over a horizontal line.

Todd N. Bleess  
Election Administrator

Enclosed: Map

cc: Joan Manthe, Waseca County Auditor  
Michelle McNulty, Office of the Secretary of State  
Joann Swanberg, Office of the Secretary of State Production Support